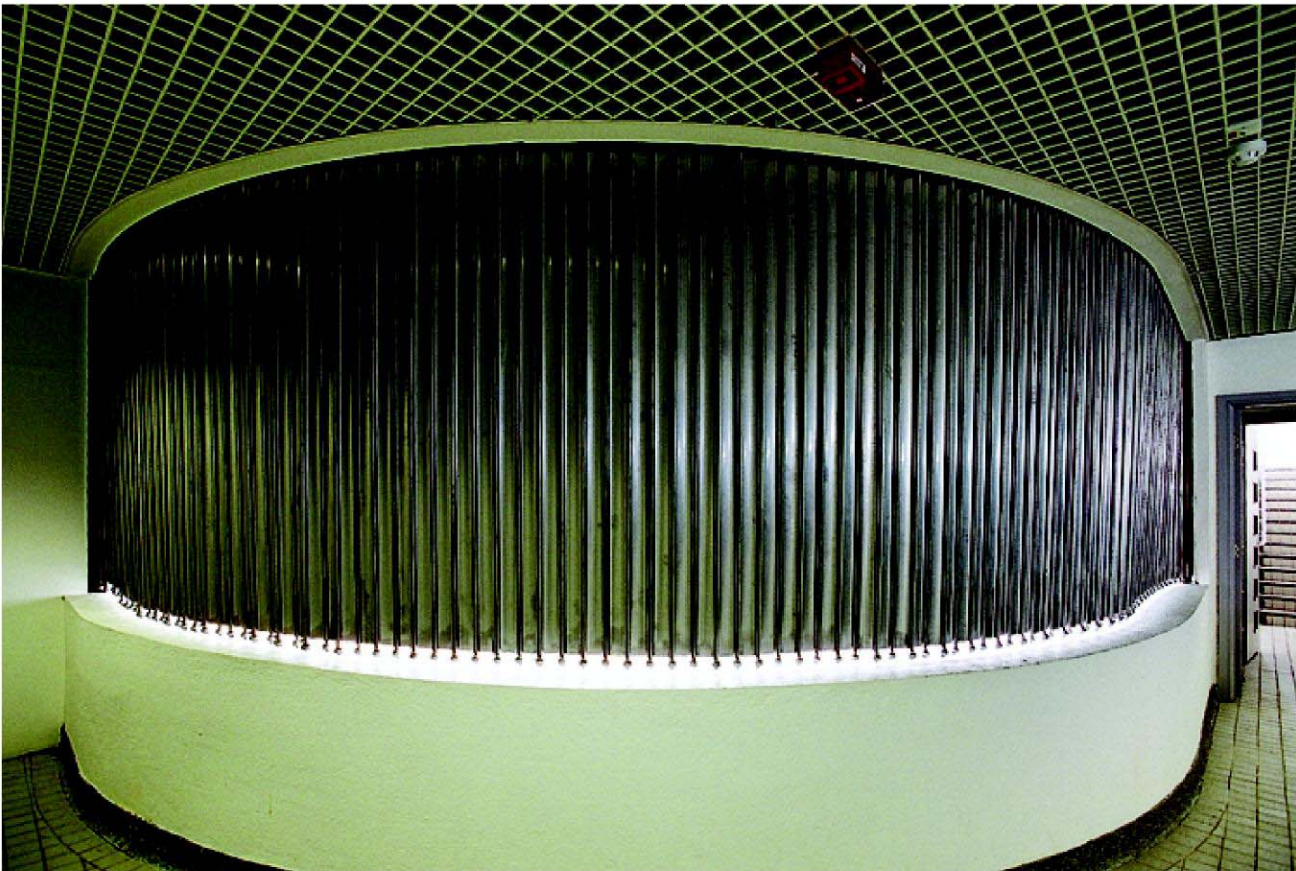


# Operation: Laterally sliding roller shutter

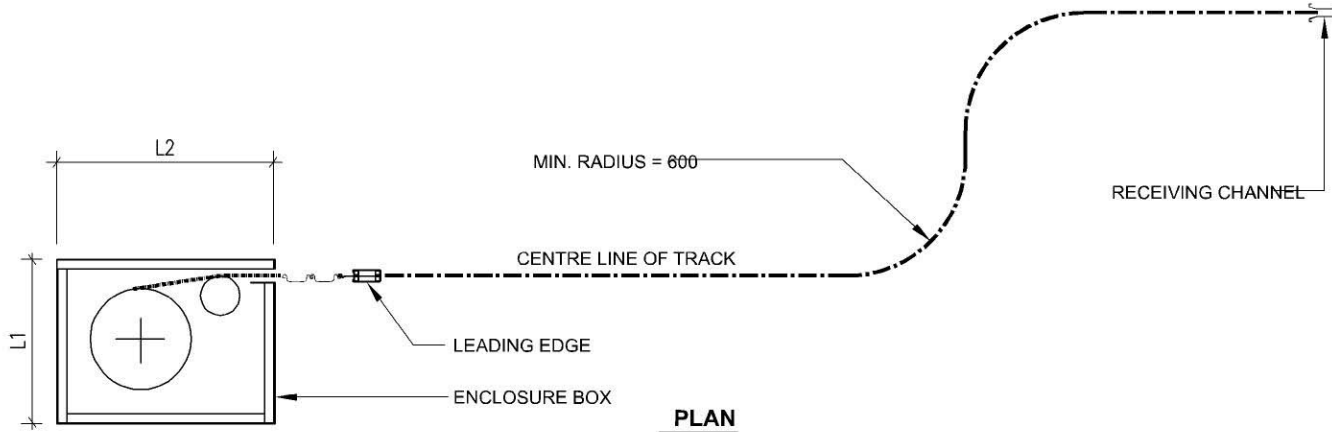
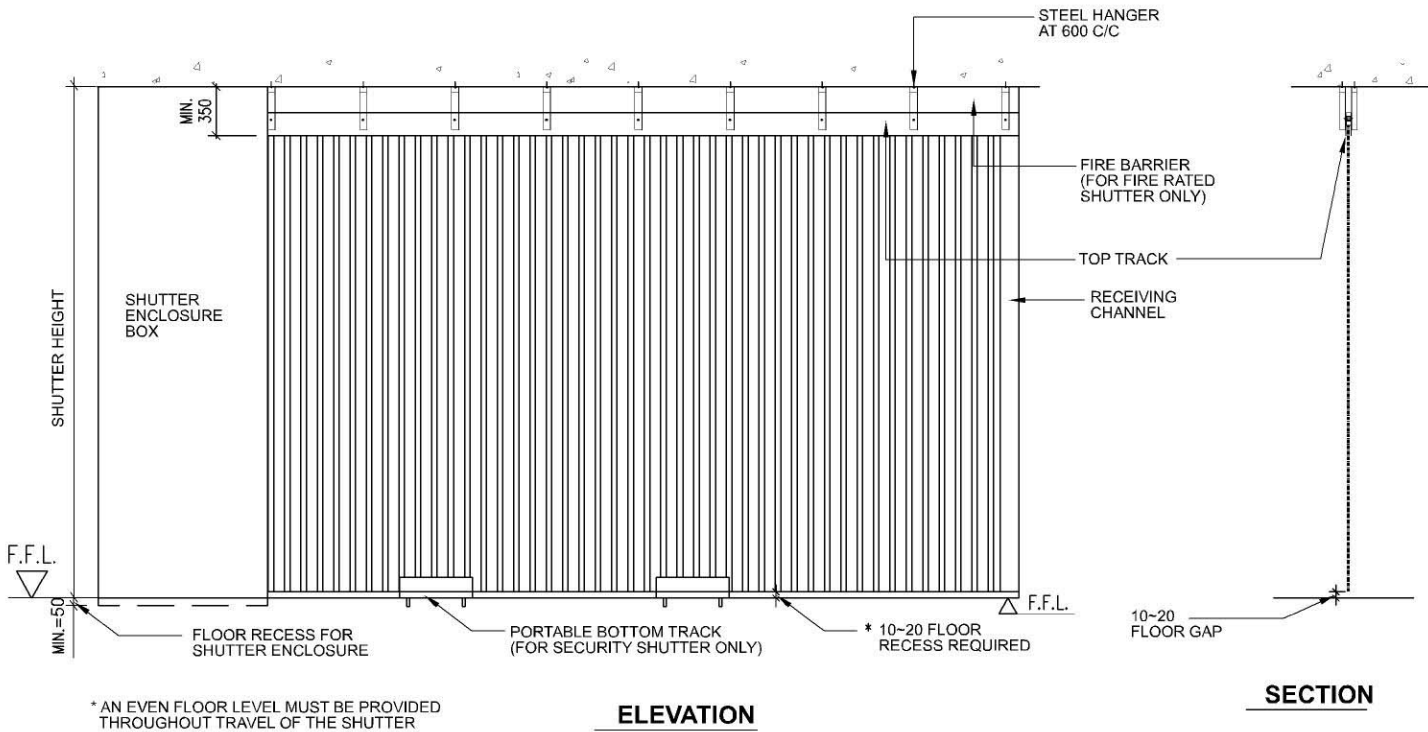


Clearseal I laterally sliding shutter



It is ideal to use the laterally sliding roller shutter for the critical location in curve.

# For critical area such as: • Curve on plan • Large opening • Limited headroom space



DIMENSIONS OF ENCLOSURE BOX (L1 AND L2)

SHUTTER WIDTH (m)	L1 (mm)	L2 (mm)
10	800	1100
20	1200	1450
30	1300	1550
40	1400	1750

